

# STAINLESS STEEL AIR VENTING FILTER HOUSING - AV

(Process and sanitary applications)

## DESCRIPTION

AV stainless steel filter housings have been developed to remove impurities from air <sup>(1)</sup> which is being feed or exhausted from tank during changing of liquid level. To meet the required air quality appropriate filter element (typically AVF filtration grade) must be installed into filter housing. AV filter housing is also designed for sterilisation. Before use, if needed for the application, sterilize the filters.



## APPLICATIONS <sup>(2)</sup>

- Packing industry
- Biotechnology
- Breweries
- Chemical industry
- Dairies
- Fermentation processes
- Food & beverage industry
- Pharmaceutical industry
- Water treatment systems

<sup>(1)</sup> For any other technical gas please contact us or your local dealer

<sup>(2)</sup> AV venting filter housing can be used in variety of applications. For applications not listed please contact us or your local dealer.

## TECHNICAL SPECIFICATION

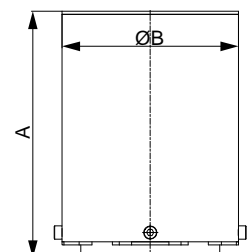
Operating temperature	Up to 200 °C	Up to 302 °F
Operating pressure	Ambient pressure (max 1.0 bar(g) due to pressure drop on filter element)	

## MATERIALS

Housing material	Stainless steel quality 1.4404 (grade 316L); on request 1.4301 (grade 304)
Housing finishes	Polished down to grade Ra0,8

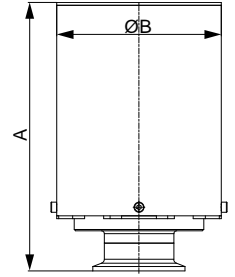
## SIZES

FILTER HOUSING	CONNECTION [DIN 11851]	FILTER ELEMENT	Flow capacity		DIMENSIONS [mm]		WEIGHT [kg]
			[Nm <sup>3</sup> /h]	[scfm]	A	ΦB	
AV 006	DN 32	1x0310 AVF	9	5	110	88,9	1,2
AV 027	DN 40	1x0525 AVF	25	14	160	114,3	2,1
AV 032	DN 50	1x0530 AVF	40	23	165	114,3	1,9
AV 072	DN 50	1x1030 AVF	110	64	290	114,3	2,6
AV 144	DN 80	1x2030 AVF	210	123	550	168,3	7,3
AV 192	DN 80	1x3030 AVF	310	182	820	168,3	9,5



## SIZES – TRI-CLAMP

FILTER HOUSING	CONNECTION [ISO 1127]	FILTER ELEMENT	Flow capacity		DIMENSIONS [mm]		WEIGHT [kg]
			[Nm <sup>3</sup> /h]	[scfm]	A	ΦB	
AV 006	DN 40 (1 ½")	1x0310 AVF	9	5	126	88,9	1,2
AV 027	DN 40 (1 ½")	1x0525 AVF	25	14	179	114,3	2,4
AV 032	DN 50 (2")	1x0530 AVF	40	23	181	114,3	2,0
AV 072	DN 50 (2")	1x1030 AVF	110	64	308	114,3	2,7
AV 144	DN 80 (3")	1x2030 AVF	210	123	568	168,3	7,7
AV 192	DN 80 (3")	1x3030 AVF	310	182	812	168,3	12,5



## PRESSURE EQUIPMENT DIRECTIVE PED 2014/68/EU (Fluid group 2)

AV 006 - AV 192

Article 4.3

## MAINTENANCE

Replace filter element at least every 12 months or follow the instructions for specific application.  
Once per year make a visual check on filter housing and make sure there is no visual damage.

INFORMATION IN THIS DOCUMENT IS SUBJECT TO CHANGE WITHOUT NOTICE



Our quality management system is certified by BUREAU VERITAS in conformity with ISO 9001:2015  
Reg. number: 200285