

# FILTER HOUSING - IHP

## DESCRIPTION

IHP stainless steel high pressure filters have been specifically developed for high efficient removal of solid particles, water, oil aerosols, hydrocarbons and other vapours from compressed air <sup>(1)</sup> systems. To meet the required compressed air quality appropriate filter element must be installed into filter housing.

## APPLICATIONS <sup>(2)</sup>

- Automotive
- Electronics
- Food & Beverage
- Chemical
- Petrochemical
- Plastics
- Paint
- General industrial application



<sup>(1)</sup> For any other technical gas please contact us or your local dealer

<sup>(2)</sup> IHP filter housing can be used in variety of applications. For applications not listed please contact us or your local dealer.

## TECHNICAL SPECIFICATION

Operating temperature <sup>(3)</sup>	-20 - 120 °C	-4 - 248 °F
Operating pressure	0 – 100, 250, 420 bar(a)	0 – 1450, 3625, 6091 psi

<sup>(3)</sup> Actual operating temperature depends on sealing material and type of filter element.

## MATERIALS

Housing material	Stainless steel 1.4301 (1.4404 on request)
Fittings, Screws	Stainless steel (1.4404)
Sealing	FKM with PTFE backup ring
Lubricant	Shell cassida grease RLS 2

## SIZES

TYPE	PIPE SIZE [inch]	FILTER ELEMENT	FLOW CAPACITY		DIMENSIONS [mm]				VOLUME [l]	MASS [kg]
			[m <sup>3</sup> /h]	[scfm]	A	B	C	D		
IHP 003	1/4	IHP0305	40	23,5	182	98	104	30	0,19	7,9
IHP 005	3/8	IHP0310	70	41,2	182	98	104	30	0,20	7,9
IHP 007	1/2	IHP0420	130	76,5	230	118	129	36	0,40	15,7
IHP 010	3/4	IHP0520	195	115	254	118	129	36	0,48	16,6
IHP 018	1	IHP0525	275	162	276	145	158	46	0,76	27,3
IHP 030	1 1/4	IHP0725	380	223	328	145	158	46	0,98	29,6
IHP 047	1 1/2	IHP0730	495	291	385	195	216	65	2,2	67,8
IHP 094	2	IHP1030	715	421	460	195	216	65	2,9	73,5

Flow capacity at 7 bar(g), 20°C

Standard is BSP pipe connection, other pipe connection on request.

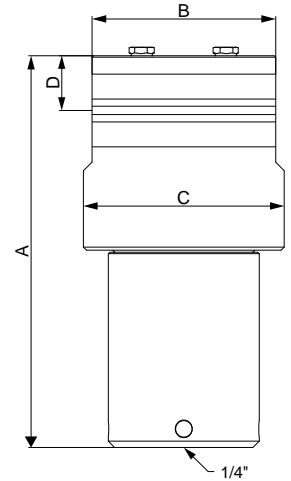
## PRESSURE EQUIPMENT DIRECTIVE PED 2014/68/EU (Fluid group 2)

IHP 003 - IHP 030	Article 4.3
IHP 047	Category 2, Module H
IHP 094	Category 3, Module H

## PRESSURE EQUIPMENT DIRECTIVE PED 2014/68/EU (Fluid group 1)<sup>(4)</sup>

IHP 003 - IHP 047	Category 3, Module H
IHP 094	Category 4, Module H1

<sup>(4)</sup>Fluid group must be specified in the order, if not standard fluid group 2 is selected.



## CORRECTION FACTORS

To calculate the correct capacity of a given filter based on actual operating conditions, multiply the nominal flow capacity by the appropriate correction factor(s).

$$\text{CORRECTED CAPACITY} = \text{NOMINAL FLOW CAPACITY} \times C_{OP}$$

### OPERATING PRESSURE

[bar]	7	25	40	64	100	250	420
[psi]	100	362	580	928	1450	3625	6091
C <sub>OP</sub>	1	3	5	8	12	12	12

## MAINTENANCE

Replace filter element at least every 12 months or follow the instructions for specific filter element. Once per year make a visual check of filter housing and make sure there is no visual damage.

INFORMATION IN THIS DOCUMENT IS SUBJECT TO CHANGE WITHOUT NOTICE

	<p>Our quality management system is certified by BUREAU VERITAS in conformity with ISO 9001:2015 Reg. number: 200285</p>	
--	--	--